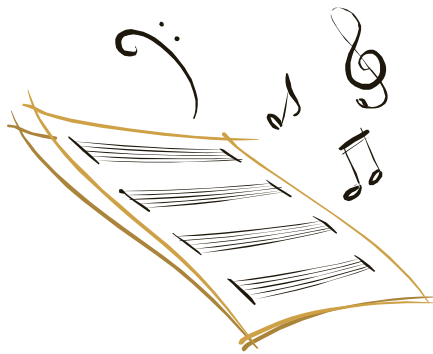


Pampa Junior High BAND



2021-2022

BAND HANDBOOK

Directors

Andrew Sedlacek
Daniel Stout
John Benton
Dakota Lancaster

Principals

Jaime Winborne
Sachio Petit
Lisa Smith

INTRODUCTION

Welcome students and parents to the Pampa Junior High Band program! The PJH Band is an exciting experience and we are excited and ready to begin the success of the 2021-2022 school year.

Band students develop in areas of responsibility, self-discipline, teamwork, social skills, confidence, leadership and dependability. Being in band will give students a sense of accomplishment and pride, and students will develop musical skills, which will enrich their lives. Band students have been carefully screened and should, with practice and effort, achieve success on their respective instruments. The amount of practice and effort on the student's part will directly reflect upon their degree of success. Parental support and encouragement is also vital to the success of the students.

The purpose of this handbook is to serve as a guide and as a source of information for students and parents involved in the Pampa Junior High School Band program. This handbook will provide information, policies, guidelines, and expectations that the students and parents will find helpful in making their band experiences successful.

This handbook is not intended to be all inclusive with every possible situation and question. A thorough knowledge of these materials is essential to the smooth operation and success of the band. Therefore when instances occur that are not covered by the handbook the band director will make the final decision.

DIRECTOR CONTACT INFORMATION

We feel that the Pampa Junior High School Band Program has much to offer students, parents and the community. We look forward to having your child in band and to establish a tradition of pride and excellence. With your help, we hope to make this a great year! If you have any questions or concerns, please call us at 669-4900 ext. 2112 or e-mail at andrew.sedlacek@pampaisd.net or daniel.stout@pampaisd.net

EXPECTATIONS

- 1. Be in your chair with all supplies needed by two minutes after the tardy bell.**
- 2. Backpacks remain in the hallway, and instrument cases stay in lockers at all times.**
- 3. Raise your hand and wait to be recognized.**
- 4. You may not leave the band hall until given permission.**
- 5. Do not play your instrument until instructed to do so.**
- 6. No food, gum, candy, or drinks in the band hall.**
- 7. Knock and wait for a response before entering the band office.**
- 8. The band office phone may only be used with permission from a director.**
- 9. Students will have music prepared before they arrive in class.**

ATTENDANCE

Regular attendance and participation is important for your daily progress and development. **Students are required to attend all performances, before and after school rehearsals.** Most dates for public appearances are announced weeks or even months in advance. **All absence requests must be submitted in writing and APPROVED by director BEFORE the event.** Absences should be for GENUINE EMERGENCY ONLY. In the event of an emergency written notice via-email, phone or letter is required the following day. Our performances are a large part of your grade and any unexcused absence from one is considered a VERY SERIOUS OFFENSE.

Unexcused absences from a before or after school rehearsal or performance may result in a lowered grade, demotion of chair rank, student not being able to perform in a concert, student not being able to go on a trip, removal from the organization or a combination of these consequences. The success of our program relies on every performer. Without everyone present, the whole group will suffer. Below is an example list of excused and unexcused absences.

Excused Absences: An absence from a rehearsal or performance will be excused due to the following reasons. These types of absences will not affect the student's grade.

- A. Death in the immediate family
- B. Personal Illness (excused only with a doctor's note)
- C. Family Emergency
- D. Observance of a religious holiday
- E. UIL Ineligibility

CONCERT ATTIRE

Honors, Symphonic, and Concert: A concert uniform is provided for the 7th and 8th grade boys and girls. Students are expected to purchase **white dress shirt, black slacks, black shoes, and black socks.** These shoes must be solid black, no other color can be on them. Ladies: no open toe shoes or flip-flops.

We will have a casual band shirt that will be worn to football games and after performances at festivals. These shirts will be purchased from the directors.

Concert Dress Guidelines:

- **Shirts will be tucked in.**
- **If a belt is worn, it will be black.**
- **Any student not wearing the complete uniform may not be allowed to perform in the concert.**

GRADING

1. Weekly Grades: meeting the expectations, as well as paying attention and participating.
2. Playing Exams: Chair Tests and Pass Offs
3. Non-Playing Exams: Written Tests and Supply Checks
4. Performances: These will count as MAJOR grades and will be worth twice the other grades. Failure to attend may result in a failing grade.

ELIGIBILITY

State law does not allow a student to participate in a U.I.L. district or region competition or any other "extra-curricular" activity unless all grades on the six-weeks report card are 70 or above. Students with a grade of 69 or lower in any class become ineligible and will maintain that status through the fourth week of the following six weeks grading period. At the end of the third week, an ineligible student must be passing ALL CLASSES with a grade of 70 or higher to become eligible. If, however, at the end of the third week following a grading period an ineligible student is failing ANY CLASS, they will remain ineligible for the remainder of the six weeks grading period.

Students who are ineligible, according to state law, will not be permitted to participate in extra-curricular activities such as UIL Contests, All-Region events, festival competitions, band trips, or parties. If you have any questions, please ask a band director for further clarification.

*** Students who are ineligible are still required/expected to perform at co-curricular events such as concerts where no admission is charged.**

AFTER SCHOOL REHEARSALS

All 7th and 8th grade students will be required to participate in scheduled rehearsal outside the school day throughout the year. Band Directors will provide a schedule at least one week in advance of any after-school rehearsals. Students will be given an opportunity to provide information on their after school activities, and times will be chosen based on that information. Rehearsal attendance will be for a grade. If a student is absent or goes home ill on the day of the rehearsal, there will be no penalty. **If there are any questions or conflicts, please feel free to contact a director.**

BAND EQUIPMENT

INSTRUMENTS:

- Instrument and all accessories needed (oil, reeds, stick bag, mouthpiece, etc.)
- Band method book
- Black 1" 3-ringer binder (provided by school)
- Pencil (no ink pens)
- Music given by the director

School-Owned Instruments:

Maintenance and care of school equipment issued to students becomes the responsibility of the **student and parent**. Abuse, lack of basic maintenance, or accidental damage will be repaired at the student and parents' expense. Only students who are issued school instruments will be allowed to play on those instruments. An "Instrument Use Agreement" form must be completed and kept on file in the band office to protect the rights of the student and the Pampa Jr. High Band program.

If you need an instrument repair and we cannot get to it during class time there is an Instrument Repair Sheet that must be filled out. Place the instrument in the band office once the Repair Sheet is complete.

***Damaged instruments need to be brought to the immediate attention of your band director and they will decide if the instrument needs to be sent to the instrument repair shop.**

Instrument Repair/Care

If an instrument needs to be sent to the music store for maintenance or a Playing Condition repair, the student will be sent home a bill with the instrument Repair/Care fee. The student will have to pay this bill before the end of the school year. Please discuss with directors about payment options.

Instrument Storage and Music

Space for storing school and privately owned instruments is provided in the band room. Instrument slots will be assigned, and the student is responsible for putting their instrument into their assigned slot and keeping his/her slot clean. No food or drinks are allowed in this area. Do not leave valuables in instrument slots. Band Directors and PISD will not be held responsible for damage or theft of instruments/valuables left at school. We recommend that you purchase insurance on your instrument. If it is stolen it can be replaced.

Locks: Students may bring a lock for their instrument locker. The combination or spare key must be given to a director before the lock is placed on a locker.

BASIC INSTRUMENT CARE

With routine care, major repairs can be avoided.

1. Keep it clean! Most costly repairs can be avoided by cleaning your instrument.
2. Do not "trade" instruments or let anyone "play with" your instrument. If damages occur, the school and district are not liable. It will be up to the student to pay for the repair.
3. Please do not try to attempt fix your instrument. Special tools are required and the use of common tools such as pliers may do more harm than good!!!

Purchasing Supplies:

Reeds, valve oil, slide grease, cork grease, etc. can be purchased from the band.

BAND PLACEMENT

Sixth and seventh grade students will be placed into the Honors, Symphonic, or Concert Band at the end of the current school year. Listed below are the areas that are taken into consideration and reflect daily classroom behavior as well as progress/proficiency on their instrument. This is the most accurate way to assess and place students into the appropriate band class.

- 6 weeks grades
- Class participation
- Attitude & classroom behavior
- Citizenship
- Attendance at Concerts and Rehearsals
- Completion of assignments
- Academic eligibility
- Practice commitments

BAND TRAVEL

Every time the band travels we represent our school and our community. Therefore we set high expectations for behavior when we travel.

- Remember that our goal for each trip is to perform to the best of our ability and act in a manner that we can be proud of as a group.
- All school rules apply on any band trip.
- Buses must leave at the scheduled time. We cannot wait for late students.
- Students will behave in an orderly manner on the bus and remain seated at all times when the bus is moving. Students will remain seated upon arrival at our destination and wait for instructions. No loud talking or yelling on the bus.
- Students will act respectfully toward all students, sponsors, and bus drivers and follow the adults' requests.
- Portable music players may be taken and used with headphones only.
- Students will be responsible for picking up any trash on the bus.
- At the contest site, students need to keep a low noise level and walk not run.

If a student wishes to ride home with anyone other than their parent/guardian, they must provide a note from their parent/guardian, and signed by a principal 24 hours before the trip.

***Students who leave without proper notification will be subject to the school-discipline policy.**

ALL-REGION BAND

Students in advanced bands (Honors, Symphonic, and Concert) may audition for the All-Region Bands. Tryout music is given to all students, and is often the most challenging music most students have ever played. It takes a great deal of time to perfect this music. Therefore, it greatly improves the students playing ability and self-discipline. All students are expected to work on this music and many playing tests will come from this music. Those students who have achieved the level of musical skill necessary to perform this music are strongly encouraged to participate in the All-Region audition process. Our students compete with students from other schools in our region and are then ranked according to their performance. The top-ranking students then attend a two-day clinic with a respected guest conductor/clinician. This procedure concludes in a concert by the All-Region Band. It is a high honor to make the All-Region band and many scholarships for college can be received from participation in this event.

CONSEQUENCES

The PJH Band Program follows the school-wide discipline policy as is outlined in the Student Handbook and Code of Conduct. The band program strives to focus on efficient learning. Within rehearsals, the implementation of that discipline policy utilizes the following structure:

1. Verbal Warning, general comment made to band
2. Verbal Warning, specific comment made toward student
3. Verbal Warning, student pulled aside for one on one conversation with a director
4. Verbal Warning, parent phone call
5. Office referral
6. Behavior Contract, specific documentation on what behaviors to fix

Failure to adhere to band and school policies can result in lowering the student's chair or the student's band.

If misbehaviors continue chronically, there will be a formal evaluation and parent conference regarding whether or not the student will be allowed to continue participating in band.